

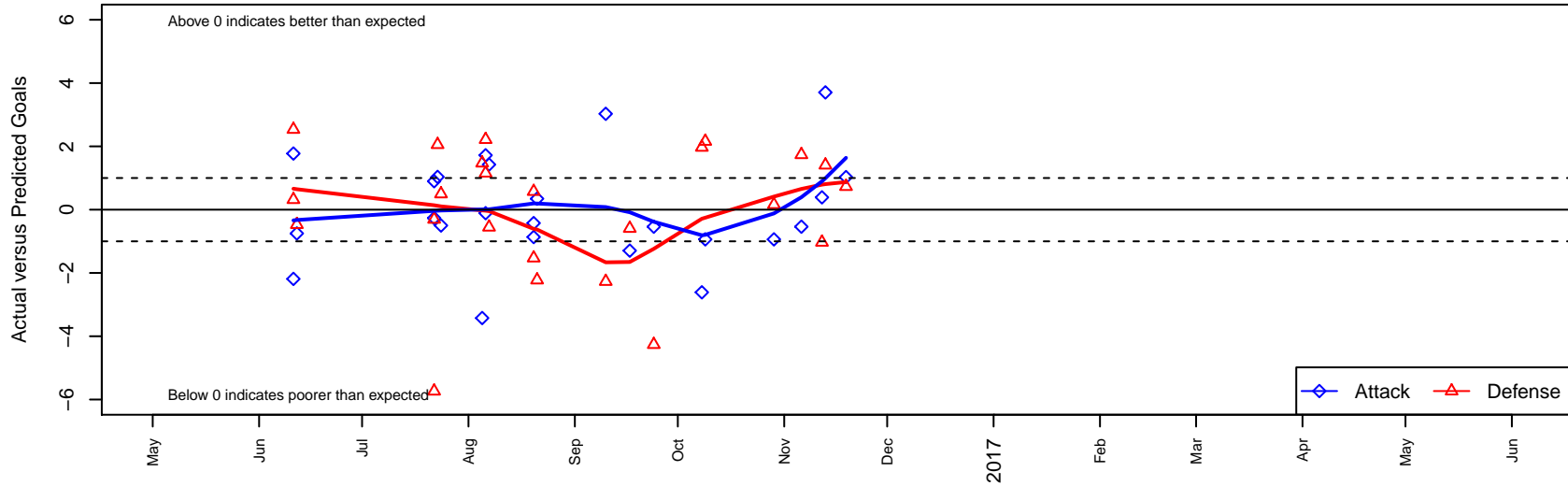
NK Fuerza B06

North Kitsap SC
 Poulsbo, WA
 B06 total strength=542
 attack=0.8 defense=0.21
 fall league = PSPL Classic 1 U11

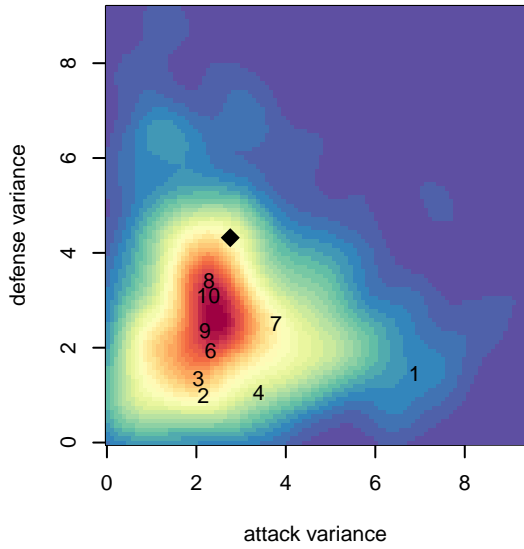
alt names used:
 Nk Fuerza
 NK Fuerza
 NK Fuerza

Venues played:
 2016 Starfire Spring Classic BU11 Gold
 2016 Crossfire Select U11 Gold
 2016 Dungeness Cup BU11 Olympic
 2016 Island Cup BU11 Gold
 2016 PSPL Classic 1 U11

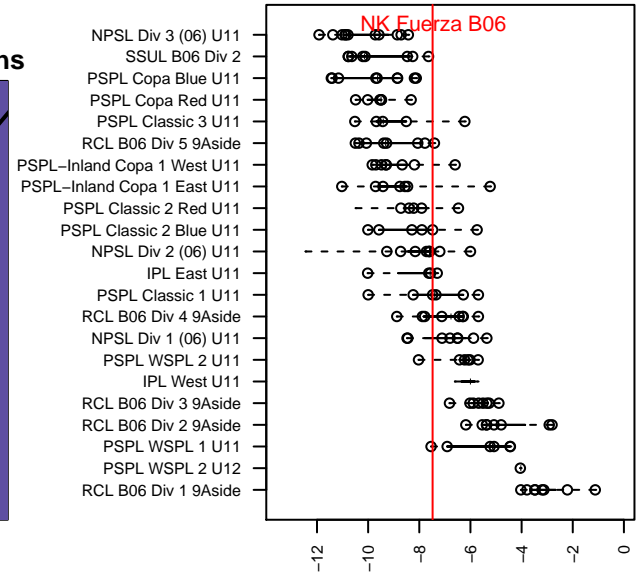
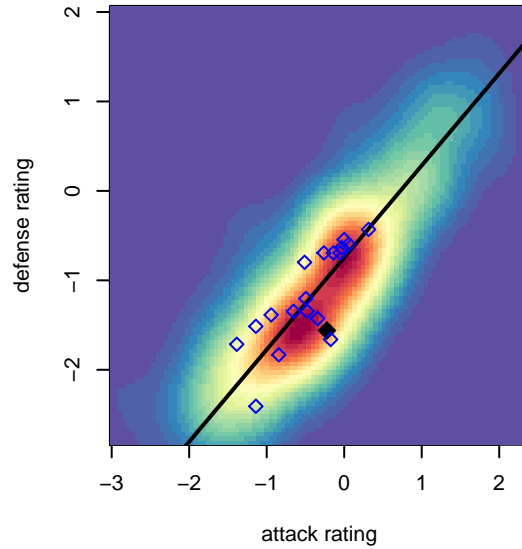
NK Fuerza B06
 Dots are actual minus expected GF (blue circles) and GA (red triangles).
 Blue line is smoothed change in attack strength. Red is smoothed change in defense strength.



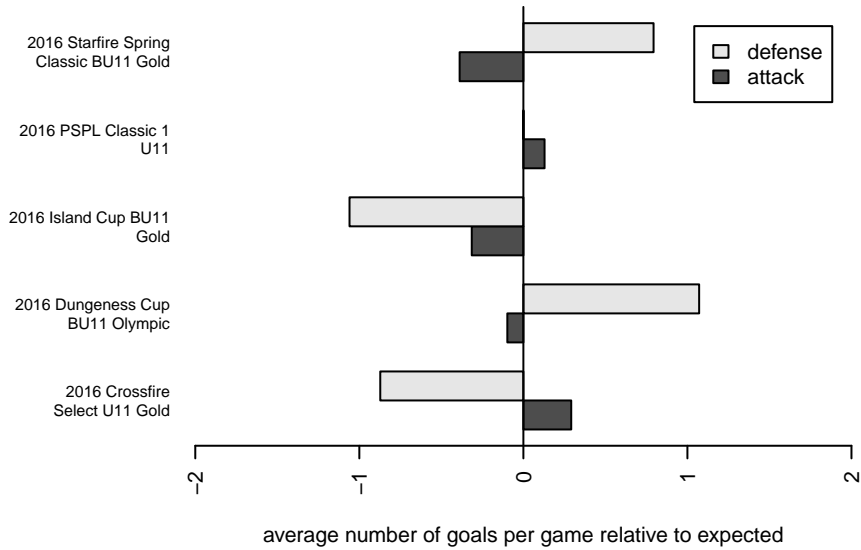
**attack and defense variance (black dot)
relative to other teams
and top 10 in region**



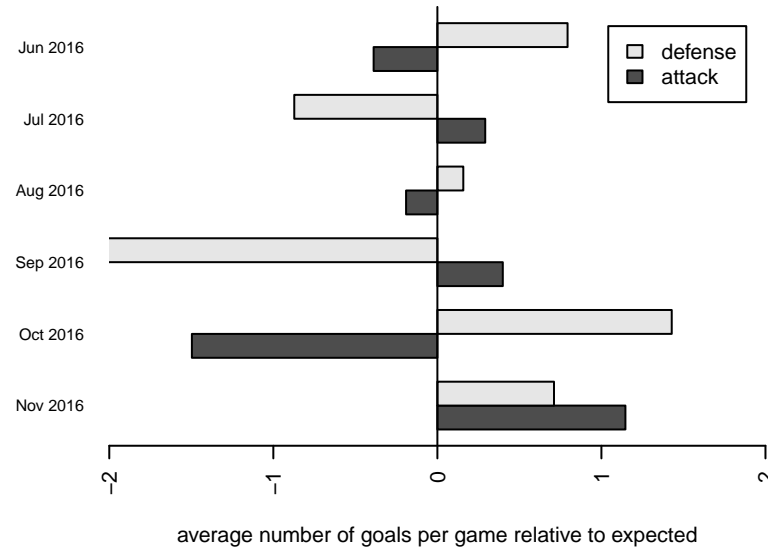
**attack and defense rating
relative to others at age
and all opponents in last 13 months**



Performance relative to 13 month average



Performance relative to 13 month average



| date | home | | away | | venue | pred.home | pred.awa |
|-------------|------------------------------------|----|------------------------------------|---|--|------------------|-----------------|
| 16-11-19 | NPSA Titans Navy Mercer Island B06 | 3 | NK Fuerza B06 | 3 | 2016 PSPL Classic 1 U11 | 3.73 | 1.97 |
| 16-11-13 | NK Fuerza B06 | 12 | FC Bellevue Raptors B06 | 0 | 2016 PSPL Classic 1 U11 | 8.29 | 1.41 |
| 16-11-12 | Monroe Cobras FC B06 | 4 | NK Fuerza B06 | 3 | 2016 PSPL Classic 1 U11 | 2.97 | 2.61 |
| 16-11-06 | NK Fuerza B06 | 1 | MVP Rapids Navy B06 | 3 | 2016 PSPL Classic 1 U11 | 1.54 | 4.74 |
| 16-10-29 | Emerald City FC Green B06 | 2 | NK Fuerza B06 | 2 | 2016 PSPL Classic 1 U11 | 2.16 | 2.94 |
| 16-10-09 | NK Fuerza B06 | 2 | Emerald City FC Green B06 | 0 | 2016 PSPL Classic 1 U11 | 2.94 | 2.16 |
| 16-10-08 | NK Fuerza B06 | 0 | Monroe Cobras FC B06 | 1 | 2016 PSPL Classic 1 U11 | 2.61 | 2.97 |
| 16-09-24 | MVP Rapids Navy B06 | 9 | NK Fuerza B06 | 1 | 2016 PSPL Classic 1 U11 | 4.74 | 1.54 |
| 16-09-17 | FC Bellevue Raptors B06 | 2 | NK Fuerza B06 | 7 | 2016 PSPL Classic 1 U11 | 1.41 | 8.29 |
| 16-09-10 | NK Fuerza B06 | 5 | NPSA Titans Navy Mercer Island B06 | 6 | 2016 PSPL Classic 1 U11 | 1.97 | 3.73 |
| 16-08-21 | NK Fuerza B06 | 3 | Nortac Sparta Red B06 | 6 | 2016 Island Cup BU11 Gold | 2.65 | 3.78 |
| 16-08-20 | NK Fuerza B06 | 1 | BIFC Blue B06 | 4 | 2016 Island Cup BU11 Gold | 1.87 | 4.57 |
| 16-08-20 | Storm King B06 | 3 | NK Fuerza B06 | 3 | 2016 Island Cup BU11 Gold | 1.47 | 3.42 |
| 16-08-07 | NK Fuerza B06 | 6 | TC United White B06 | 2 | 2016 Dungeness Cup BU11 Olympic | 4.57 | 1.45 |
| 16-08-06 | NK Fuerza B06 | 6 | RSA Elite B B06 | 1 | 2016 Dungeness Cup BU11 Olympic | 4.28 | 2.15 |
| 16-08-06 | NK Fuerza B06 | 3 | RSA Elite B06 | 1 | 2016 Dungeness Cup BU11 Olympic | 3.11 | 3.21 |
| 16-08-05 | Storm King B06 | 0 | NK Fuerza B06 | 0 | 2016 Dungeness Cup BU11 Olympic | 1.47 | 3.42 |
| 16-07-24 | NK Fuerza B06 | 1 | Seattle United W Blue B06 | 4 | 2016 Crossfire Select U11 Gold | 1.50 | 4.50 |
| 16-07-23 | NK Fuerza B06 | 3 | Kent United Green B06 | 1 | 2016 Crossfire Select U11 Gold | 1.97 | 3.05 |
| 16-07-22 | Seattle Celtic White B06 | 11 | NK Fuerza B06 | 1 | 2016 Crossfire Select U11 Gold | 5.26 | 1.27 |
| 16-07-22 | NK Fuerza B06 | 5 | Lake Hills Hurricanes B06 | 4 | 2016 Crossfire Select U11 Gold | 4.10 | 3.69 |
| 16-06-12 | NK Fuerza B06 | 1 | Cascade FC Green B06 | 5 | 2016 Starfire Spring Classic BU11 Gold | 1.75 | 4.53 |
| 16-06-11 | Highline Premier Heat Blue B06 | 6 | NK Fuerza B06 | 3 | 2016 Starfire Spring Classic BU11 Gold | 6.32 | 1.23 |
| 16-06-11 | NK Fuerza B06 | 1 | South Tacoma United Lopez B06 | 0 | 2016 Starfire Spring Classic BU11 Gold | 3.19 | 2.54 |